

15SVE02F015P0T/4

Technical data

Company name
Contact
Phone number
e-mail address

Operating data

Pump type	Single head pump	Fluid	Water, pure
No. of pumps / Reserve	1 / 0	Operating temperature t A	°C 4
Nominal flow	m ³ /h 0	pH-value at t A	7
Nominal head	m 0	Density at t A	kg/dm ³ 1
Static head	m 0	Kin. viscosity at t A	mm ² /s 1.569
Inlet pressure	kPa 0	Vapor pressure at t A	kPa 100
Environmental temperature	°C 20	Solids	0
Available system NPSH	m 0	Altitude	m 0

Pump data

Make	Lowara	Nominal	m ³ /h ()
Speed	1/min 2900	Flow	Max- m ³ /h 29
Number of stages	2	Min-	m ³ /h 8.5
Max. casing pressure	kPa	Nominal	m
Max. working pressure	kPa 293.4	Head	at Qmax m 3.8
Head H(Q=0)	m 30	at Qmin	m 28.7
Weight	kg 31	Shaft power	kW ()
Max.	mm	Max. shaft power	kW 1.5
Impeller R designed	mm	Efficiency (Hydraulic+Motor+Drive)	%
Min.	mm	NPSH 3%	m

Pump Materials

Pump body	Stainless steel / AISI 304
Impeller	Stainless steel / AISI 304
Diffuser	Stainless steel / AISI 304
Outer sleeve	Stainless steel / AISI 304
Shaft	Stainless steel / AISI 304
Adapter	Cast iron
Base	Aluminium
Coupling	Aluminium
Seal plate	Stainless steel / AISI 304
Coupling protection	Stainless steel / AISI 304
Shaft sleeve and bushing	Tungsten carbide
Fill / drain plugs	Stainless steel / AISI 304
Tie rods	Stainless steel
Wear Ring	Technopolymer PPS
Seal gland	Stainless steel / AISI 304

Shaft Seal

Single seal	Roten
SV - Uniten	
Rotating Assembly	Q1-Silicon carbide
Fixed Assembly	B-Resin impregnated carbon
Elastomers	E - EPDM
Springs	G-AISI 316
Other Components	G-AISI 316

Motor data

Manufacturer	Lowara	Electric voltage	460 V	Speed	3600 1/min	Insulation class	F
Specific design	Three phase e-SM motor			Frame size	90R	Colour	RAL 5010
Type	ESM90R/315 SVE	Electric current	3.97 A				
Rated power	1.5 kW	Degree of protection	IP 55				

Remarks:

15SVE02F015P0T/4

Performance curve

Company name
Contact
Phone number
e-mail address

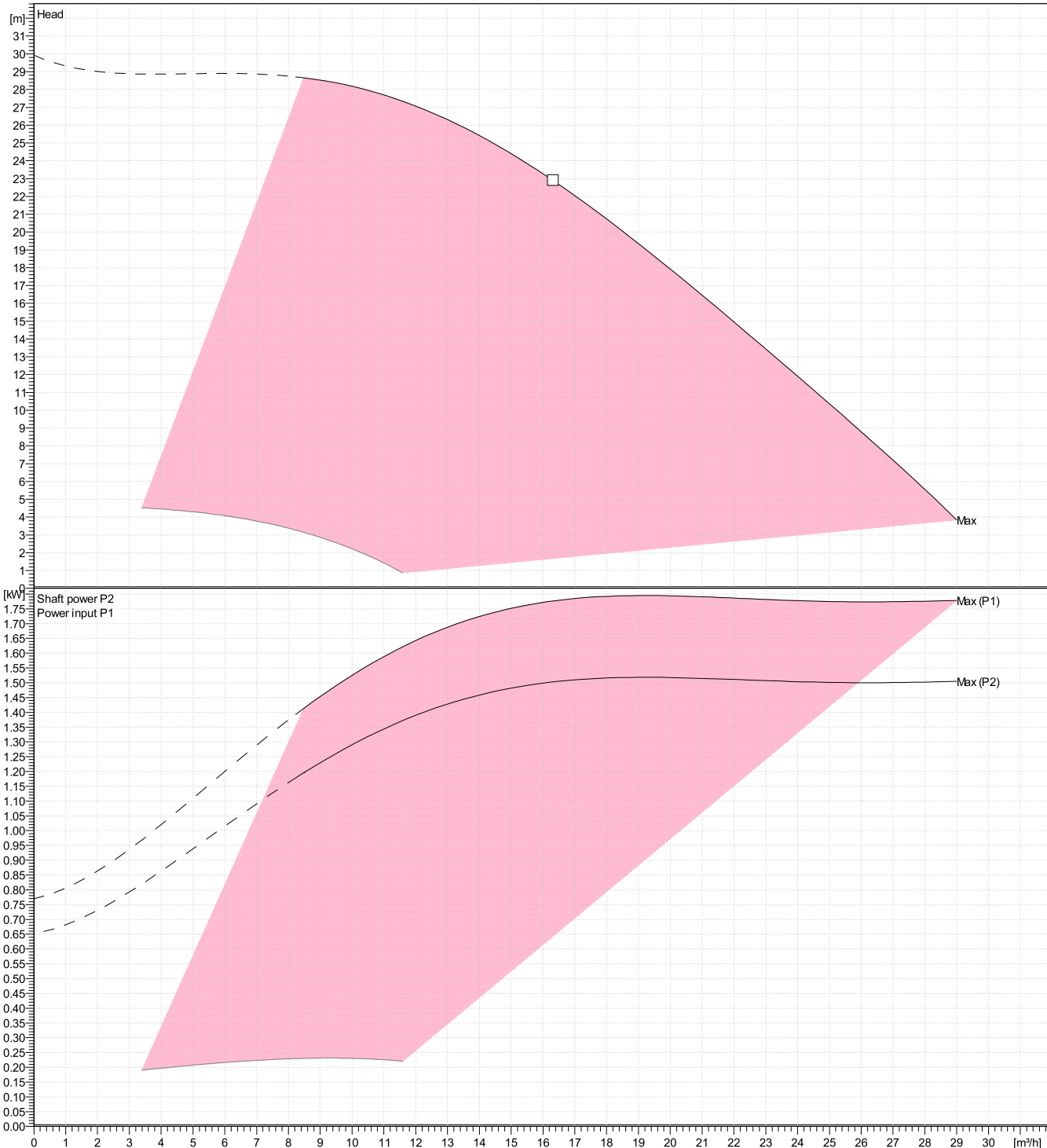
Hydraulic data

Operating Data Specification		Hydraulic data (duty point)		Impeller design	
Flow	0 m ³ /h	Flow		Impeller R	0 mm
Head	0 m	Head		Frequency	50 Hz
Static head	0 m			Speed	2900 1/min

Power datas referred to:

Water, pure [100%] ; 4°C; 1kg/dm³; 1.57mm²/s

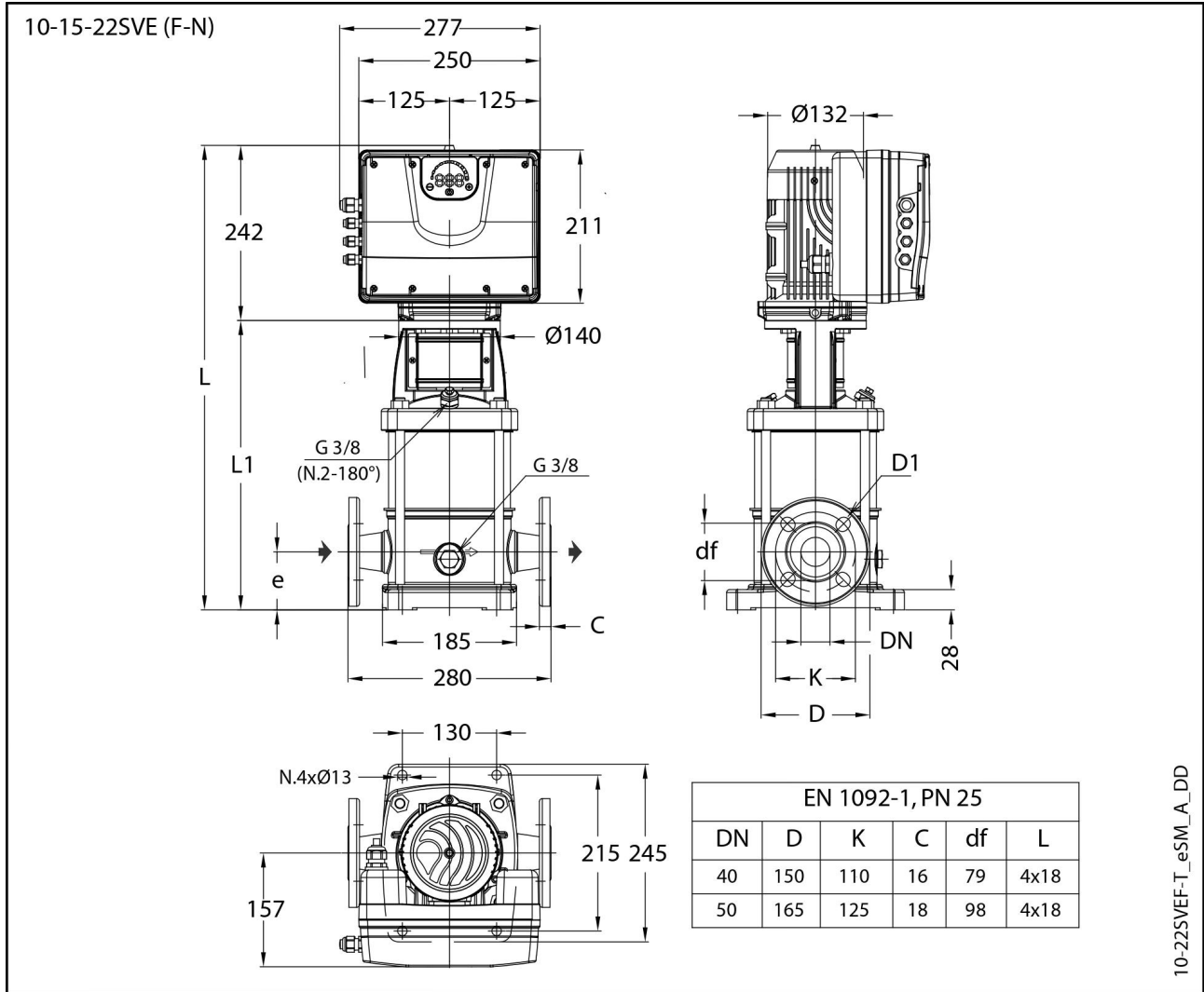
Performance according to ISO 9906:2012 – Grade 3B



Dimensions

Company name
Contact
Phone number
e-mail address

Drawing



Dimensions mm

DN	50					Weight
e	90					30 kg
L	661					
L1	419					